

Auslogics

Driver Updater

User Manual



Table of Contents

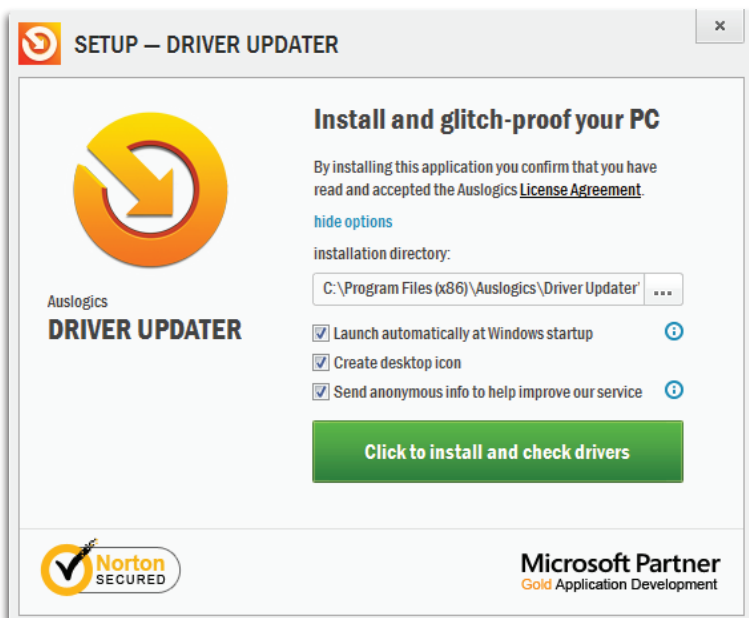
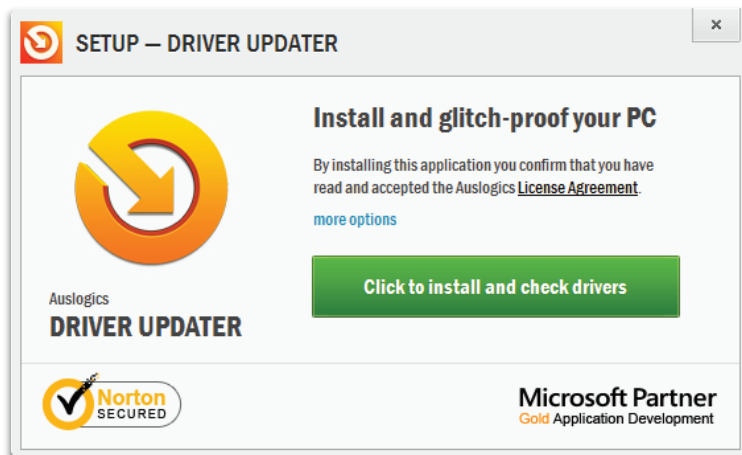
| | |
|--|---|
| Welcome | 3 |
| Installation Guide | 3 |
| Scanning for driver issues | 4 |
| Scan Categories | 5 |
| Registering Auslogics Driver Updater | 6 |
| Help and Support | 7 |

This is your guide to one of the most comprehensive sets of tools for detecting all missing or outdated drivers on your PC and getting the latest versions installed for smoother and faster system performance.

Installing Auslogics Driver Updater

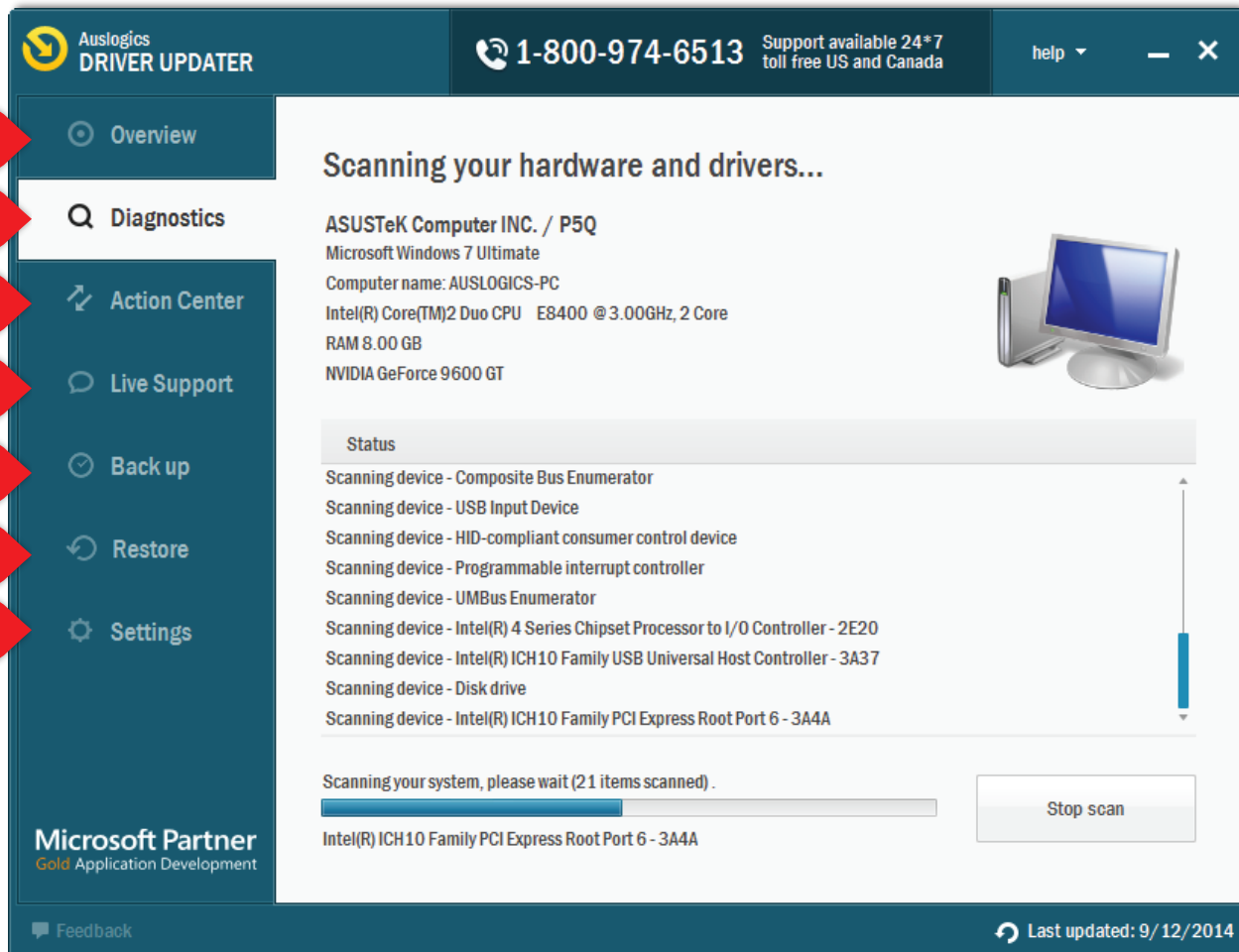
Before installation, please make sure your computer meets the following minimum system requirements:

- Windows Win 8 (32 or 64 bit), Win 7 (32 or 64 bit), Vista SP2 (32 bit only), XP SP3 (32 bit only)
- 50 MB of available hard-disk space
- 512 MB RAM



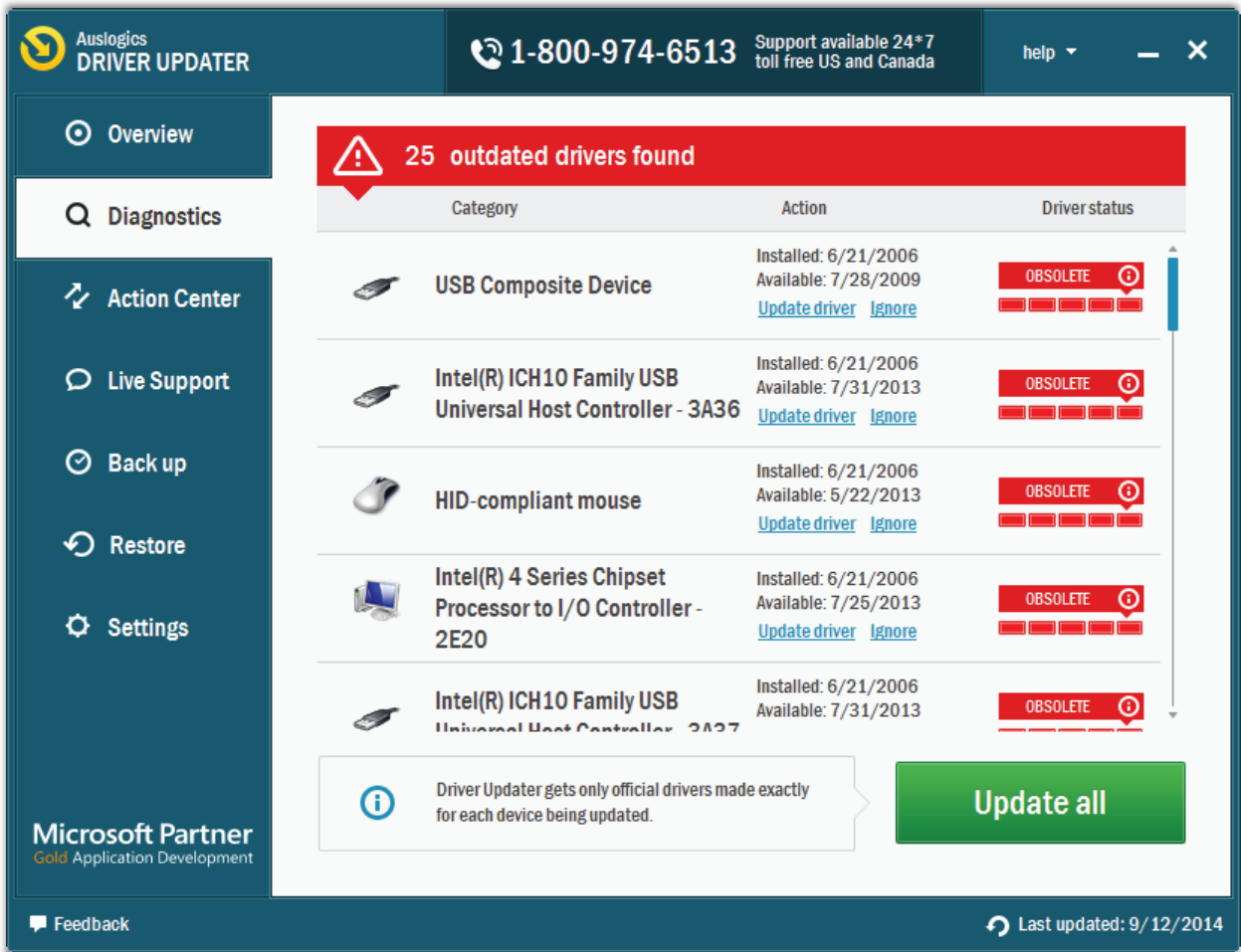
The installation process is very straightforward and won't take more than a minute to finish. To start installation, please press the **'Click to install and check drivers'** button. Before you do that, you can also check additional installation options by clicking on **'more options'**.

As soon as the installation completes, the program will automatically start a scan for missing or outdated drivers on your PC and get the latest versions.



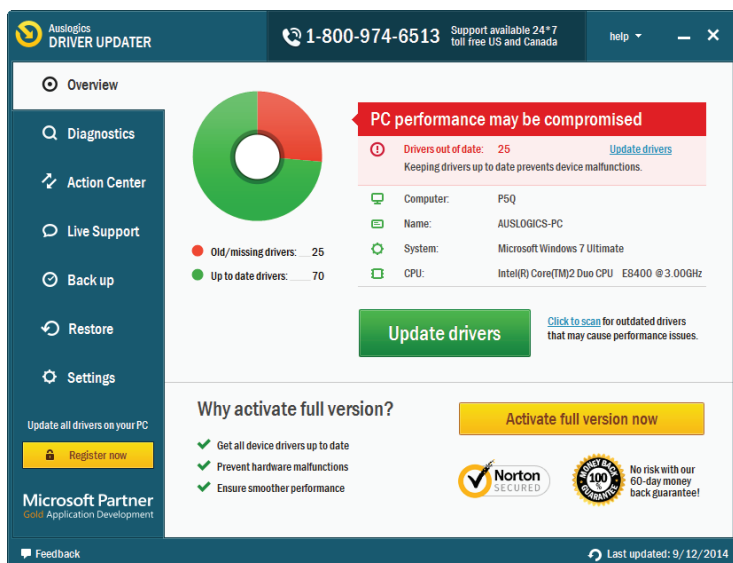
- 1 **Overview.** See a general report on detected driver issues or, if you have not yet performed a full system scan, start it automatically.
- 2 **Diagnostics.** See detailed scan results.
- 3 **Action Center.** Lorem impus
- 4 **Live Support.** Get live expert support via phone or chat.
- 5 **Back up.** Restore backed up older driver versions if you don't like the update.
- 6 **Restore.** Roll back the updates if you don't like the results.
- 7 **Settings.** Change program settings

While scanning, Auslogics Driver Updater looks for missing or outdated drivers. The issues are listed by the devices they are associated with.



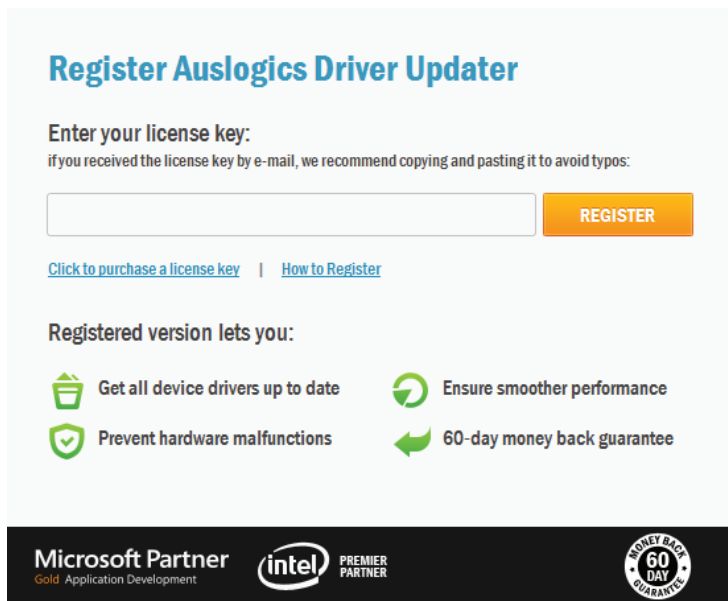
When the scan completes, you can select a specific driver issue to fix or update all drivers at once.

You will need to register your product to unlock full functionality.



After purchase, you will receive an email with your license code.

- Click on **'Register now'** in the bottom right corner. A pop-up will prompt you to enter your license code.
- Find the license code that was sent to you in your order confirmation email.
- Copy and paste* it directly into the registration field
- Once the license code has been entered, click **'Register'**. You will receive a confirmation that the application has been successfully activated.



* To copy and paste:

Highlight the license code by clicking the left mouse button in front of it and then dragging it to the right, until you have covered all of it.

When done, right-click on the highlighted area and select **'Copy'**.

Go back to Auslogics Driver Updater. Now you will need to right-click inside the registration field and choose **'Paste'**.

Should you have any questions about Auslogics Driver Updater don't hesitate to email our dedicated customer support team 24/7. We are always happy to help.

Thank you,

Auslogics

support@auslogics.com